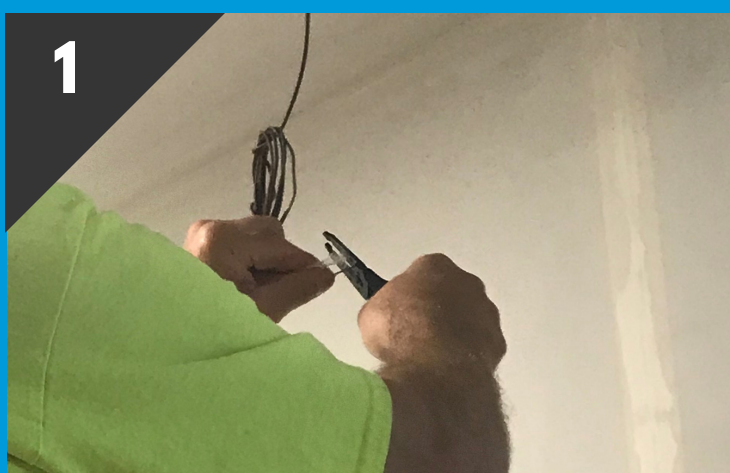


# 4 SIMPLE STEPS TO FINDING BURIED THERMOSTAT WIRE

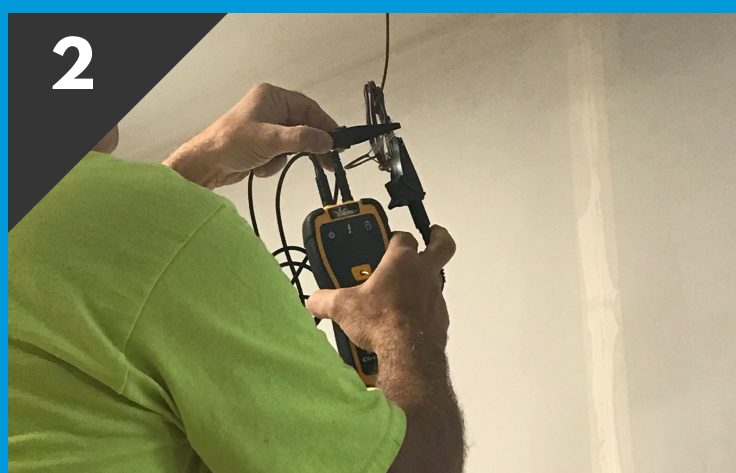
Often times, wires are buried when a home is being drywalled. In this example, the thermostat wire for the garage furnace was buried. Here's a simple step-by-step tutorial to locating these wires in an easy and cost effective way, using the SureTrace™ Circuit Tracer by IDEAL®.



1

## STRIP CONDUCTORS

Strip the conductors of the thermostat wire at the location where the wires are accessible. Please note that the low voltage wire in this photo is de-energized.



2

## ATTACH ALLIGATOR CLIPS

Attach the alligator clips, included in the IDEAL® SureTrace™ Circuit Tracer kit, to the transmitter.



3

## TURN ON TRANSMITTER AND RECEIVER

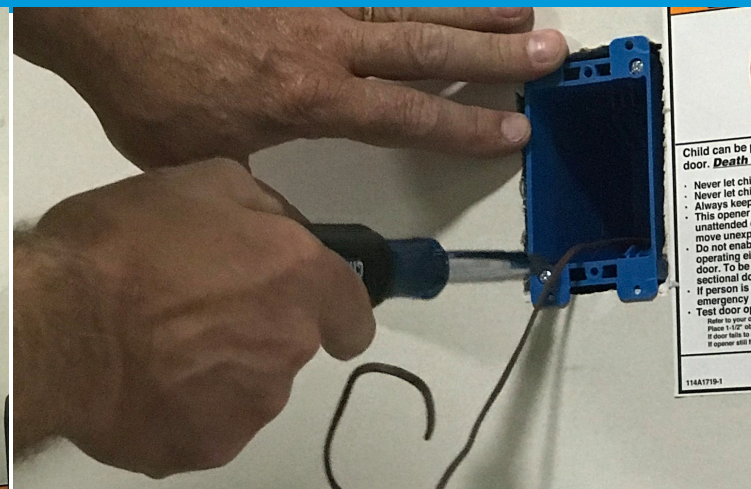
Turn on the Transmitter and the Receiver. You will see that the "Lightning Bolt" is not lit on the Receiver and the Transmitter. That would indicate that the circuit is not energized.



4

## USE RECEIVER TO LOCATE BURIED WIRES

Wand the Receiver and trace the dry-walled area for the thermostat wires that were buried. The receiver provides a numeric value and variable pitch that increases as the signal becomes stronger. Note that you may need to adjust the sensitivity level of the receiver.



**IMPORTANT:** This tracer is intended for use by qualified electricians. Follow NFPA 70E Standard for Electrical Safety in the Workplace when using this tester. Always consult the instruction manual provided with the tester for operational limitations and procedures associated with a specific tester.