

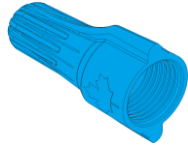


CanTwist®

WIRE CONNECTORS

Model: 007

FEATURES / BENEFITS:



- CONTOURED WING DESIGN PROVIDES EXTRA LEVERAGE FOR MAXIMUM TORQUE
- WIDE RANGE, LIVE-ACTION SPRING HANDLES SMALL COMBINATIONS AND EXPANDS TO ACCOMMODATE LARGE COMBINATIONS AS REQUIRED
- POLYMER SHELL EXPANDS FOR SMOOTH, PROGRESSIVE TIGHTENING ENSURING DEPENDABLE CONNECTIONS

ELECTRICAL:

VOLTAGE: 600V MAXIMUM

APPLICATION TOOLS:

- SPIN TWIST WIRE CONNECTOR SOCKET

PHYSICAL:

HOUSING: POLYPROPYLENE
 INSERT: PLATED STEEL SQUARE WIRE SPRING
 PLATING: ZINC
 TEMPERATURE RATING: 105° C (221° F)

STANDARDS AND SPECIFICATIONS:

UL 94 V-2 FLAME RATING
 CSA C22.2 NO. 188
 RoHS COMPLIANT
 Cu/Cu only

WIRE RANGE & COMBINATIONS:

- SOLID AND/OR STRANDED WIRE COMBINATIONS UNLESS STATED OTHERWISE

STRIP LENGTH: 1/2" (12.7mm)

Minimum: 3 #22

Maximum: 3 #10

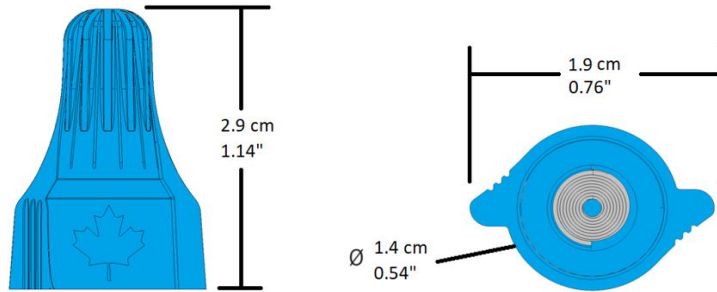
1 to 3 #10
 1 #10 with 1 #8
 1 to 3 #12
 4 #12 solid
 1 #12 with 1 or 2 #10
 1 #12 with 1 #8
 2 #12 with 1 #10
 1 to 5 #14
 1 #14 solid with 1 to 3 #12
 1 #14 with 1 or 2 #10
 1 #14 with 1 or 2 #12 with 1 #10
 2 #14 with 1 or 2 #12
 2 #14 with 1 or 2 #10
 2 #14 with 1 #8
 2 #14 with 1 #12 with 1 #10

3 #14 with 1 #10 or #12
 3 #14 with 2 #12
 4 #14 with 1 #10 or #12
 1 to 6 #16
 1 #16 with 1 to 4 #14 or #12
 1 #16 with 1 or 2 #10
 1 #16 with 1 #12 with 1 #10
 2 #16 with 1 #14 with 1 or 2 #12
 2 #16 with 2 #14 with 1 #12
 2 #16 with 1 #12 with 1 #10
 2 #16 with 1 to 4 #14
 2 #16 with 1 to 3 #12
 2 #16 with 1 or 2 #10
 3 #16 with 1 to 3 #14
 3 #16 with 1 or 2 #12 or #10

3 #16 with 1 #14 with 1 #12 or #10
 4 #16 with 1 or 2 #14 or #12
 4 #16 with 1 #10
 4 #16 with 1 #12 with 1 #10
 5 #16 with 1 #14
 5 #16 solid with 1 #14
 1 #16 solid with 1 or 2 #14 / 1 #12 or #10
 2 to 6 #18
 1 #18 with 1 or 2 #10
 1 #18 with 1 to 4 #16, #14 or #12
 2 #18 with 1 to 4 #16 or #14
 3 #18 with 1 to 3 #12
 2 #18 with 1 or 2 #10
 3 #18 with 1 to 3 #16 or #14 or #12
 3 #18 with 1 or 2 #10

4 #18 with 1 to 2 #16 or #14 or #12
 4 #18 with 1 #10
 5 #18 with 1 #16 or #14
 2 to 6 #20
 1 #20 with 1 to 4 #18 or #16 or #14
 2 #20 with 1 to 3 #18 or #16 or #14
 3 #20 with 1 or 2 #18 or #16 or #14
 3 to 6 #22
 1 #22 solid with 1 #20 solid
 1 #22 with 2 to 5 #20
 1 #22 with 1 to 5 #18 or #16
 2 #22 with 1 to 4 #20 or #18 or #16
 3 #22 with 1 to 3 #20 or #18 or #16
 4 #22 with 1 or 2 #20 or #18 or #16
 1 #22 with 1 #18 with 1 #16
 1 #22 with 1 #20 with 1 or 2 #16

DIMENSIONS:



ORDERING INFORMATION:

DESCRIPTION:	CATALOGUE PART NUMBER:	WEIGHT (LBS):	WEIGHT (Kg):
C-PAK OF 100	30-207	0.43	0.19
JAR OF 175	30-107J	0.75	0.34
JAR OF 475	30-307J	2.04	0.92
BAG OF 500	30-607	2.15	0.97
JAR OF 1000	30-707J	4.29	1.95
STUBBY BARREL OF 7500	30-817	32.18	14.60
BARREL OF 25000	30-807	107.26	48.65

FACTORY CONTACT:

IDEAL INDUSTRIES (CANADA), CORP.
 33 FULLER ROAD, AJAX, ONTARIO, CANADA L1S 2E1
 905-683-3400

SALES CONTACT:

orderdesk@idealindustries.com
 1-800-824-3325