

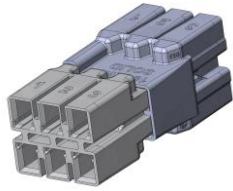


MODELS 184/186



DISCONNECT

FEATURES/BENEFITS:



- MULTI-CIRCUIT MATING CONNECTOR WITH PUSH-IN TERMINATIONS ALLOWS TOOL-FREE AND SIMPLE INSTALLATION AT OEM AND IN FIELD
- TOUCH-SAFE DESIGN ON BOTH HALVES, MEETS UL/CSA REQUIREMENT
- WIPING CONTACT DESIGN ALLOWS SAFE DISCONNECT UNDER LOAD
- LOW INSERTION FORCE MAY REDUCE RISK OF REPETITIVE TRAUMA INJURY

ELECTRICAL:

VOLTAGE: 600 V MAX  
 CURRENT INTERRUPTION: 10 CYCLES  
 CURRENT RATED DEVICE: 3 AMPS

MECHANICAL:

18 AWG INSERTION FORCE: 3 LB (13 N) MAX  
 1/2"KO (0.875" HOLE): COMPLIANT

PHYSICAL:

HOUSING: NYLON 94V-0  
 CONTACTS: COPPER ALLOY  
 PLATING: TIN  
 TEMPERATURE: 105 C (221 F)  
 STRIP LENGTH: 3/8" (9,5 mm)  
 COLOR: WHITE  
 POLARIZED: YES

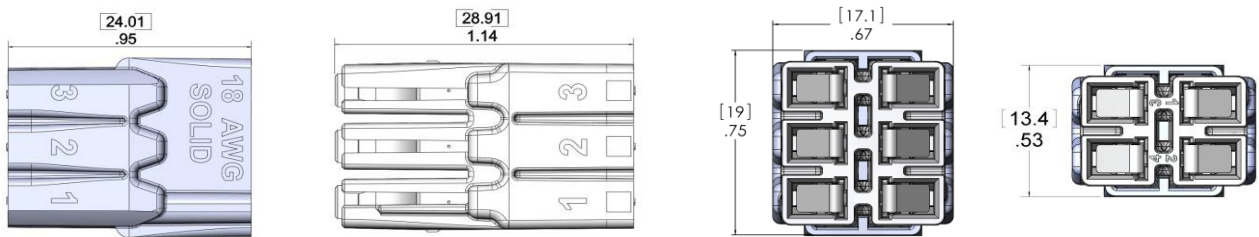
STANDARDS & SPECIFICATIONS:

UL 2459  
 CSA- C22.2 NO. 2459  
 RoHS COMPLIANT  
 NEC 2008 410.130(G) COMPLIANT  
 CEC 30-308(4) COMPLIANT  
 UL 94V-0 FLAME RATING  
 US & FOREIGN PATENTS PENDING

WIRE RANGE:

|            |                     |
|------------|---------------------|
|            | MODELS 184 & 186    |
| SOLID      | 18 AWG              |
| STRANDED   | N/A                 |
| TIN BONDED | 18 AWG (≤16 STRAND) |

DIMENSIONS:



ORDERING INFO:

| CATALOG # | MODEL | # CIRCUITS | PACKAGE TYPE       | WEIGHT LBS (KG): |
|-----------|-------|------------|--------------------|------------------|
| 30-1184M  | 184   | 4          | 2,000 PIECE CARTON | 14.9 (6.8)       |
| 30-1184F  | 184   | 4          | 2,000 PIECE CARTON | 13.6 (6.2)       |
| 30-1186M  | 186   | 6          | 2,000 PIECE CARTON | 21.4 (9.7)       |
| 30-1186F  | 186   | 6          | 2,000 PIECE CARTON | 18.9 (8.6)       |

FACTORY CONTACT:

ENGINEERED SOLUTIONS  
 IDEAL INDUSTRIES, INC.  
 BECKER PLACE SYCAMORE IL  
 USA 60178  
 P: 1-800-324-9571  
 F: 1-888-222-6140  
 E: oem@idealindustries.com

SALES CONTACT: