

CHIP-LOK[®] Reflector Adaptor **for use with LEDiL reflectors**

LEDiL



- *Enables easy attachment of LEDiL reflectors with CHIP-LOK[®] LED Array Holders*
- *Reflector interface supports LEDiL, Lena, Lenina, Angela, Angelina, Mirella and Mirella-PF*
- *CHIP-LOK[®] Jr. Holders compatible directly with Stella-T4*
- *Standardized mounting screw locations make changes to other arrays and reflectors simple*



US Patent Nos. 9,146,027 & 9,249,955

LEDiL[®] and the LEDiL logo are registered trademarks of
Ledil Oy Corporation Finland.



Chip-Lok® Reflector Adaptor

Compatible IDEAL Reflector Adapters

LEDIL® Family	Mirella	Mirella PF	Lena/Lenina	Angela/ Angelina	Angela/ Angelina	Stella T4		
IDEAL Catalog No.	50-2000MR	50-2100MR	50-2100LN	50-2100AN	50-2300AN	Compatible w/ IDEAL Holder	IDEAL Holder	IDEAL Holder Family
Bridgelux® V22			•	•			50-2204CT	Chip-Lok®
Citizen® CLU02x	•					•	50-2002CT	Chip-Lok® Jr.
Citizen® CLU03x			•	•			50-2103CT	Chip-Lok®
Citizen® CLU04x			•	•			50-2204CT	Chip-Lok®
Cree® CX_13	•					•	50-2000CR	Chip-Lok® Jr.
Cree® CX_15	•					•	50-2001CR	Chip-Lok® Jr.
Cree® CX_18		•	•	•			50-2101CR	Chip-Lok®
Cree® CX_18			•	•		•	50-3001CR	Chip-Lok® Jr.
Cree® CX_25			•	•			50-2102CR	Chip-Lok®
Cree® CX_25			•	•		•	50-3002CR	Chip-Lok® Jr.
Cree® CX_30			•	•			50-2234C	Chip-Lok®
Cree® CX_35					•		50-2303CR	Chip-Lok®
Edison® 2PHM05/2PHM09	•					•	50-2002CT	Chip-Lok® Jr.
Edison® 2PHM16/2PHM30			•	•			50-2103CT	Chip-Lok®
Edison® 2PHM40			•	•			50-2204CT	Chip-Lok®
Lextar® Nimbus 1000	•					•	50-2002CT	Chip-Lok® Jr.
Lextar® Nimbus 2000/3000/5000			•	•			50-2204CT	Chip-Lok®
Liteon® M08	•					•	50-2002CT	Chip-Lok® Jr.
Liteon® M09		•	•	•			50-2101CR	Chip-Lok®
Liteon® M04			•	•			50-2103CT	Chip-Lok®
LG® LEMWM18			•	•			50-2100LG	Chip-Lok®
LG® LEMWM24			•	•			50-2204CT	Chip-Lok®
Lumileds® 1202s/105/107/109	•					•	50-2000P	Chip-Lok® Jr.
Lumileds® 1202/1203		•	•	•			50-2100NC	Chip-Lok®
Lumileds® 1204/1205/1208			•	•			50-2100SH	Chip-Lok®
Lumileds® 1211/1216			•	•			50-2204CT	Chip-Lok®
Luminus® CXM-9-ACxx, CHM-9-ACxx, CLM-9-ACxx, CHM-6-X00	•					•	50-2002CT	Chip-Lok® Jr.
Luminus® CXM-14-ACxx, CHM-14-ACxx, CVM-14-AC00, CHM-9-XH0x, CHM-11-XH0x, CXM-11-ACxx, CLM-14-AC3x			•	•			50-2103CT	Chip-Lok®
Luminus® CXM-18-AAxx, CVM-18, CHM-14-XH00			•	•			50-2012SL	Chip-Lok®
Luminus® CLM-22-AC3x, CXM-22-ACxx, CHM-22-AC0x			•	•			50-2204CT	Chip-Lok®
NICHIA® NTCxS024B, NTCxS024B-V1, NJCxS024Z	•					•	50-2000P	Chip-Lok® Jr.
NICHIA® NFCxL036B, NFCxL036B-V1, NFCxL060B, NFCxL060B-V1, NSDxL110, NVCxL024Z		•	•	•			50-2100NC	Chip-Lok®
NICHIA® NFCxJ108B, NFCxJ108B-V1, NFDxJ130B, NFDxJ130B-V1, NVExJ048Z			•	•			50-2103NC	Chip-Lok®

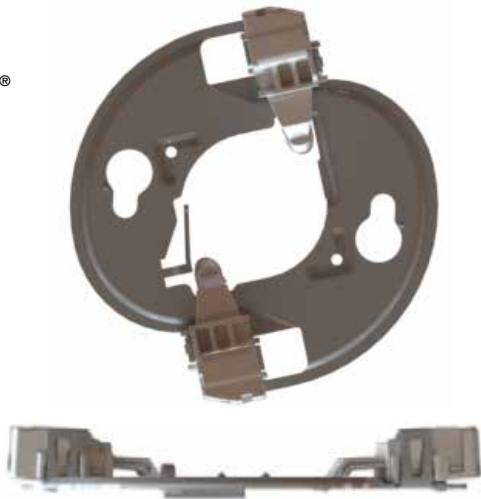
Compatible IDEAL Reflector Adapters

LEDIL® Family	Mirella	Mirella PF	Lena/Lenina	Angela/ Angelina	Angela/ Angelina	Stella T4		
IDEAL Catalog No.	50-2000MR	50-2100MR	50-2100LN	50-2100AN	50-2100- 2300AN	Compatible w/ IDEAL Holder	IDEAL Holder	IDEAL Holder Family
OSRAM® S9	•					•	50-2002CT	Chip-Lok® Jr.
OSRAM® S13			•	•			50-3001CR	Chip-Lok® Jr.
OSRAM® S13/P13		•	•	•			50-2101CR	Chip-Lok®
Samsung LC040B			•	•			50-2102SL	Chip-Lok®
Seoul® SDWx1	•					•	50-2002CT	Chip-Lok® Jr.
Seoul® SDWx2/SDWx3			•	•			50-2103CT	Chip-Lok®
Seoul® SDWx4/SDWx5/SDWx6			•	•			50-2204CT	Chip-Lok®
Sharp® Mini ZENIGATA	•					•	50-2000P	Chip-Lok® Jr.
Sharp® Mega ZENIGATA			•	•			50-2100SH	Chip-Lok®

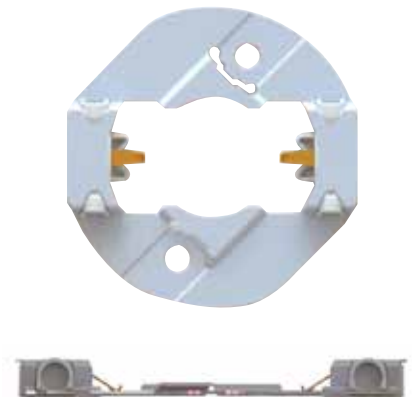
Bridgelux® is a registered trademark of Bridgelux, Inc.
 Citizen® is a registered trademark of Citizen Holdings Co., LTD. Japan
 Cree® is a registered trademark of Cree, Inc.
 Edison® is a trademark of Edison-Opto Corporation.
 Lextar® is a registered trademark of Lextar Electronics Corporation.
 LG® is a registered trademark of LG Corporation.
 Liteon® is a registered trademark of Lite-On Technology Corporation.

Lumileds® and LUXEON® are registered trademarks of Philips Lumileds Lighting Company.
 Luminus® is a registered trademark of Luminus Devices, Inc.
 NICHIA® is a registered trademark of Nichia Corporation
 OSRAM® is a registered trademark of OSRAM GmbH.
 SAMSUNG® is a registered trademark of Samsung Electronics Co.
 Seoul® is a registered trademark of Seoul Semiconductor Co., LTD, Korea.
 Sharp® and Zenigata® are registered trademarks of Sharp Corporation.

Chip-Lok®



Chip-Lok® Jr.





Chip-Lok® LED COB Array Holder

Flange provides strength & thermal path to allow chip to run cooler

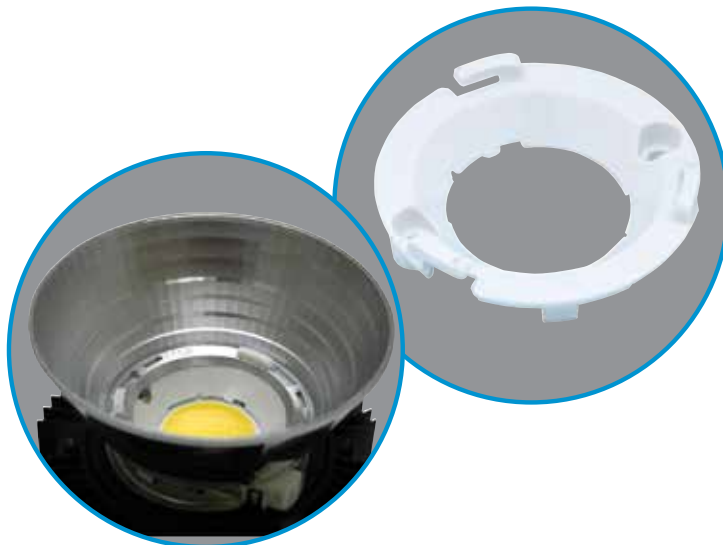
Hardened stainless prevents creep over time/temperature

Daisy chaining capable

Spring holds PCB in position to ease assembly



50-2100AN Adaptor shown with LEDIL® Angelina.



Visit www.idealind.com to see all our Lighting-OEM Products!

U.S.: oem@idealindustries.com • 1-800-324-9571
Brazil: ideal_brazil@idealindustries.com • +55-11-4314-9930
Canada: ideal_canada@idealindustries.com • +1-(800) 824-3325
China: ideal_china@idealindustries.com • +86-21-31263188, Ext. 209
German: germanysales@idealind.com • +49-89-99686-0
India: oem@idealindustries.com • +91 0124 4495106
Mexico: oem@idealindustries.com • +1-815-899-7796
UK: enquiries@idealind.com • +44 (0)1925 444 446