



INSURE® Model 39 Push-In Wire Connector

Installation Instructions:

To be sold only with installation instructions.

⚠ Warning ⚠ Improper use or installation of this product may cause fire, electrocution, serious personal injury or death. Shut off power to the circuit or remove fuse before using this product. Use only connectors properly sized to the wiring being used. Consult local building codes for installation requirements.

1. Wiring must comply with all applicable electrical codes.
2. Turn OFF power before removing or installing connectors.
3. Cleanly strip wires 1/2" (13mm).
4. Grip wire firmly and push conductor into open port. Slightly twist stranded wire counter clockwise while inserting. Use only one conductor per port.
5. Verify conductor is fully inserted to the back of the connector.
6. Connector is reusable on solid wires only of the same wire gauge or larger. If reusing connector, cut and re-strip conductors.
7. In order to remove a wire, pull and twist the wire back and forth.
8. DO NOT RE-USE connector on stranded wire.

Wire Ranges

Solid Copper	10 – 14 AWG (6.0-2.5 mm ² Rigid)
Solid Copper-Clad Aluminum	10 – 12 AWG
Stranded Copper	10 – 12 AWG (≤19 Stranded)
Stranded Tin-Bonded Copper	10 – 14 AWG (≤19 Stranded)

CAUTION: Listed for use with CU or CC. Do Not Use on Aluminum wire. DO NOT RE-USE connector on stranded wire. For use in dry locations only. Consult IDEAL for a complete table of UL Listed and CSA Certified Combinations.

For use on insulation types TFN, TFFN, THHN, XHHW, T90 nylon or equivalent.

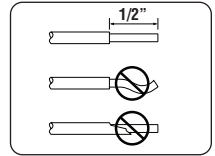
Temperature Rating: 105°C (221°F) maximum.

Voltage Rating: 600V maximum building wire. 1000V in signs and lighting fixtures.

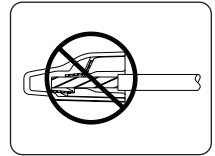
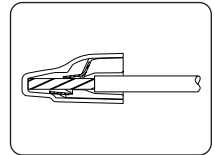
⚠ WARNING: Cancer and Reproductive Harm - www.P65Warnings.ca.gov.

WARRANTY: www.idealind.com

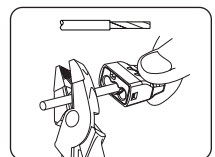
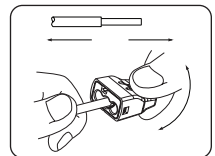
Wire Strip Length



Insertion



Removal



IDEAL INDUSTRIES, INC.

Sycamore, IL 60178, U.S.A.

800-435-0705 Customer Assistance

www.idealind.com

ND 9496-2

Made in U.S.A. of US and global components.

