



INSURE® Model 32, 33, 34 Push-In Wire Connectors

Installation Instructions:

To be sold only with installation instructions.

⚠ Warning Contact with electricity can cause electrical fires, personal injury, or death. Shut off power to the circuit before using this product and consult local building codes to determine installation requirements.

1. Wiring must comply with all applicable electrical codes.
2. Turn OFF power before removing or installing connectors.
3. Cleanly strip wires 1/2" (13mm).
4. Grip wire firmly and push conductor into open port. Slightly twist stranded wire counter clockwise while inserting. Use only one conductor per port.
5. Verify conductor is fully inserted to the back of the connector.
6. Connector is reusable on solid wires of the same wire gauge or larger. If reusing connector, cut and re-strip conductors.
7. In order to remove a wire, pull and twist the wire back and forth.

Wire Ranges

Solid (Reusable): 12 to 20 AWG

Stranded: 12 to 16 AWG (≤ 19 Strands)

18 AWG Stranded (7 Strands) (Non-Reusable)

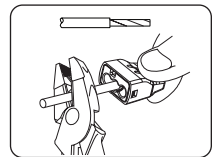
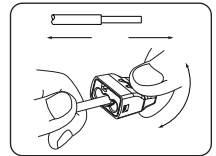
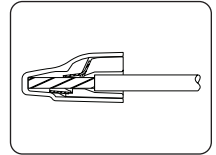
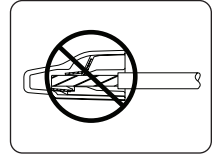
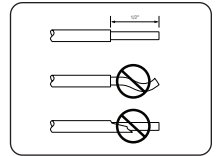
DO NOT use with 16 AWG (26 Strands)

DO NOT RE-USE connector on stranded wire.

COPPER TO COPPER ONLY: Do Not Use on Aluminum wire.

Temperature Rating: 105°C (221°F) maximum. 600 volts maximum building wire. 1000 volts in signs and lighting fixtures.

For use on insulation types TFN, TFFN, THHN, XHHW, T90 nylon or equivalent.



IDEAL INDUSTRIES, INC.

Sycamore, IL 60178, U.S.A.

800-435-0705 Customer Assistance

www.idealind.com

ND 6779-2

