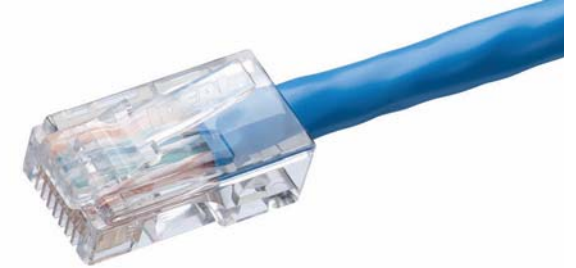




## CAT5e RJ-45 8P8C Standard Modular Plug

Modular plug designed for termination to CAT5e twisted pair cables. Plugs are all 8 position – 8 contacts for use with Ethernet and related data applications.

- 50µ gold plated contacts to minimize wear on individual contacts
- 3 prong contacts for secure connection to each wire
- Primary and secondary strain reliefs secures cable in place
- Non-keyed (standard) connectors for use with standard crimpers
- Designed for 100MHz application compatibility (CAT5e)
- Non-feed-thru design with closed end face.
- Fits cables with .XXXXXX" jacket diameter
- Fits most cables with 24 AWG solid/stranded conductors
- Compatible with many 23 AWG solid conductors (CAT6) cables
- Requires industry standard cable preparation
- Recommended IDEAL cable jacket prep tool: 45-605
- Recommended crimp tools: 30-696, 30-496, 30-495, 33-396
- Compatible with non-IDEAL tools



Part No.	Qty
85-147	10/Card
85-379	15/Card + 15 strain boots
85-346	25/Card
85-396	50/Card
86-396	100/Bag

**Also available:**



CAT5e Feed-Thru



30-496



30-696