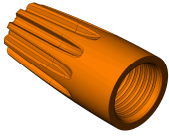




**WIRE-NUT®  
WIRE CONNECTORS**

**MODELS  
71B®, 72B®, 73B®, 74B® & 76B®**

**FEATURES/BENEFITS:**



- WIDE WIRE RANGE ENABLES USE ON VARIETY OF APPLICATIONS
- FIXED, SQUARE-WIRE SPRING CREATES ITS OWN THREADS
- MAINTAINS A SECURE CONNECTION THAT WILL NOT RELAX OVER TIME
- POSITIVE-GRIP SHELL DESIGN PROVIDES FAST, EASY INSTALLATION
- PRE-TWISTING OF WIRES IS NOT REQUIRED
- REUSEABLE FOR EASY CIRCUIT CHANGES AND ADDITIONS

**ELECTRICAL:**

VOLTAGE: 71B® / 72B® 300 VOLTS MAX.  
73B® / 74B® / 76B® 600 VOLTS MAX.\*  
  
(\* 1,000 VOLTS MAX. SIGNS & FIXTURES)

**APPLICATION TOOLS:**

- ACAM (AUTOMATIC CONNECTOR APPLICATION MACHINE)
- WIRE-NUT® Wire Connector Sockets: **30-903** (71B® & 72B®), **30-904** (73B®), **30-906** (74B® & 76B®), **H-632** (73B®, 74B® & 76B®), **30-902** (73B®, 74B® & 76B®)

**PHYSICAL:**

HOUSING: POLYPROPYLENE (UL 94V-2 FLAME RATED)  
INSERT: STEEL  
PLATING: ZINC

**STANDARDS & SPECIFICATIONS:**

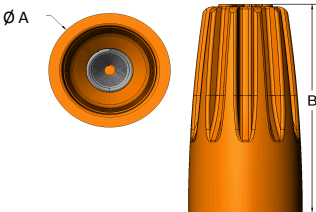
UL LISTED: UL 486C  
CSA CERTIFIED: C22.2 NO. 188  
RoHS COMPLIANT



**WIRE RANGE & COMBINATIONS:**

MODEL	71B® (GRAY)	72B® (BLUE)	73B® (ORANGE)	74B® (YELLOW)	76B® (RED)
WIRE RANGE:	MIN. 2 #22 Str. MAX. 2 #16	MIN. 2 #22 MAX. 3 #16	MIN. 1 #18 w/1 #20 MAX. 2 #14	MIN. 2 #18 MAX. 4 #14 w/1 #18	MIN. 2 #14 MAX. 4 #12
WIRE STRIP LENGTH	Solid: 1/4" (6 mm) Str: 5/16" (8 mm)	≤ #16 AWG: 1/2" (13 mm) All Others: 3/8" (9.5 mm)	≤ #16 AWG: 3/8" (9.5 mm) All Others: 5/16" (8 mm)	≤ #16 AWG: 7/16" (11 mm) All Others: 3/8" (9.5 mm)	≤ #16 AWG: 1/2" (13 mm) All Others: 7/16" (11 mm)
COMBINATIONS:	<b>300V MAX:</b> 1 #14 1 or 2 #16 1 #18 Str. 1 #16 w/1 #18 2 #18 w/1 #20 2 or 3 #18 2 to 4 #20 4 #20 w/1 #22 2 #22 Str. 3 or 4 #22 5 #22 Sol.	<b>300V MAX:</b> 1 #14 Str. 1 #16 Str. 1 #14 w/1 #16 1 #14 w/1 or 2 #18 2 or 3 #16 2 #16 w/1 #18 1 #18 str. 2 to 4 #18 3 to 5 #20 4 #20 w/1 #22 2 #22	<b>600V MAX:*</b> 1 or 2 #14 1 #14 w/1 or 2 #18 1 #16 Str. 1 #14 w/1 #16 1 #16 w/1 or 2 #18 2 #16 2 #16 w/1 #18 1 #18 Str. 1 #18 w/2 to 4 #20 1 #18 w3 to 4 #22 2 to 4 #18	<b>600V MAX:*</b> 1 to 3 #12 1 to 4 #14 2 to 5 #16 3 to 6 #20 2 to 5 #18 1 #10 w/1 #12 2 #12 w/1 or 2 #18 2 #12 w/1 or 2 #14 2 #14 w/1 to 3 #18 1 #10 w/1 or 2 #14 1 #12 w/1 to 3 #14	<b>600V MAX:*</b> 1 or 2 #10 1 to 4 #12 2 to 5 #14 4 to 6 #16 1 #16 w/4 #18 1 #14 w/3 or 4 #18 2 #14 w/2 to 4 #16 2 #12 w/1 to 3 #14 1 #10 w/1 to 3 #14 1 #10 w/1 or 2 #12 2 #10 w/1 #14

**DIMENSIONS:**



MODEL	A		B	
	INCHES	mm	INCHES	mm
71B®	0.33	8	0.58	15
72B®	0.39	10	0.70	18
73B®	0.44	11	0.86	22
74B®	0.55	14	0.95	24
76B®	0.59	15	1.06	27

**ORDERING INFO:**

	71B® (GRAY)	72B® (BLUE)	73B® (ORANGE)	74B® (YELLOW)	76B® (RED)
CATALOG NUMBERS	<b>30-071</b> 100/Box <b>30-171</b> 1,000/Carton <b>30-271</b> 25,000/Keg <b>30-871</b> 150,000/Barrel	<b>30-072</b> 100/Box <b>30-172</b> 1,000/Carton <b>30-272</b> 10,000/Keg <b>30-872</b> 85,000/Barrel	<b>30-073</b> 100/Box <b>30-073J</b> 300/Jar <b>30-173</b> 1,000/Carton <b>30-273</b> 500/Bag <b>30-673</b> 10,000/Keg <b>30-873</b> 50,000/Barrel	<b>30-074</b> 100/Box <b>30-074J</b> 175/Jar <b>30-174</b> 1,000/Carton <b>30-274</b> 500/Bag <b>30-674</b> 10,000/Keg <b>30-874</b> 35,000/Barrel	<b>30-076</b> 100/Box <b>30-076J</b> 150/Jar <b>30-176</b> 1,000/Carton <b>30-276</b> 250/Bag <b>30-876</b> 15,000/Barrel

**FACTORY CONTACT:**

IDEAL INDUSTRIES, INC.  
BECKER PLACE  
SYCAMORE, IL 60178  
  
PHONE: (815) 895-5181  
(800) 435-0705 in USA

**NOTES:**