



DATA TOOLS & ACCESSORIES



SCAN HERE
FOR TECHNICAL
INFORMATION, VIDEOS
AND INSTRUCTIONS



IDEAL.



G DATA TOOLS & ACCESSORIES

Consistent Data Terminations	G-4
FT-45™ Modular Plug Crimp Tool	G-8
Cat 6/5e Modular Plugs.....	G-10
Modular Plugs & Boots	G-11
FT-45™ Kits.....	G-12
Data T® -Cutter	G-14
Electrician's Scissors	G-14
PrepPRO™ Coax/UTP Cable Stripper	G-14
Coax Strippers	G-15
Kinetic Wire Stripper and IDC Connectors	G-16
Crimp Tools.....	G-17
Punch Down Tools	G-19
OmniSeal™ Pro Compression Tool	G-20
LinearX® Compression Tool	G-21
Compression Connectors	G-22
Fibre Cutter.....	G-25
Fibre Stripper	G-25
Fibre Optic Scribes	G-25
Splitters	G-26

CONSISTENT DATA TERMINATIONS FOR SMART BUILDINGS

Introducing smart technology tailored to meet a building's occupancy patterns and the tenant's commercial requirements is a proven strategy for reducing energy consumption and avoiding energy waste.

We have come a long way since the days of basic timers and PIR sensor lighting control systems, with smart building networks that are both flexible and programmable to ensure they can be adapted to changing needs.

INCREASED DATA TERMINATIONS

With increasingly sophisticated smart building systems comes a requirement for increasingly complex data networks, and installing those networks requires a large number of terminations.

Each termination requires attention to detail to ensure a robust and compliant connection.

In a multi-storey office block, any smart building installation or retrofit project is likely to involve multiple operatives carrying out the terminations and consistency can be compromised by individuals working with varying standards of quality.

Time pressures can also jeopardise quality and consistency, with tight programmes causing terminations to be rushed, reducing consistency as a consequence.

When consistency and compliance are compromised, identifying the terminations on the system that need to be rectified can be an onerous and time-consuming task.

The answer, therefore, is to ensure terminations are carried out in a way that guarantees best practice and consistency, regardless of the number of operatives and time pressures on site.



INSTALLATION ISSUES

Data networks require field-termination of CAT5e, CAT6 or CAT6A cables using RJ-45 modular plugs.

The more complex the network, the greater the number RJ-45 assemblies and terminations required.

Conventional installation methods require conductors to be trimmed to an exact length before the plug is placed onto the cable.

If the conductors are too short, circuits will remain open, but this will not be evident until the system is tested. Finding the issues on the network at this point can be a needle-in-a-hay-stack exercise.

If the conductors are too long, meanwhile, there is a risk that the pairs could be left exposed outside of the plug body or cable jacket.

This not only looks sloppy, but could also hinder performance on the network.

In this scenario, the conductors can also move out of place; an issue that is likely to remain unnoticed until the cables are tested.

To overcome both of these potential data network termination issues, contractors need to adopt a technique that will offer complete consistency for every termination, regardless of the number of installation operatives involved, without increasing the time needed to complete the work.

It was these requirements that led to the development of IDEAL Industries' FT-45 Feed-Thru modular plugs and crimp tool.





CONSISTENT DATA TERMINATIONS FOR SMART BUILDINGS

CONTINUED

SPEED, SIMPLICITY AND CONSISTENCY

Designed to completely re-think the traditional RJ-45 assembly and crimping process, IDEAL Industries' FT-45 solution allows installers of smart networks to speed up and simplify the termination of RJ-45 plugs by eliminating the need to trim conductors to a precise length before inserting the cable into the plug.

FEED-THRU™ MODULAR PLUGS

The Feed-Thru Modular Plugs are single-piece connectors, so there is no need for installers to assemble a three-piece connector, even when working with CAT6 cable.

This makes terminations faster, simpler and more consistent, whether using CAT5e, CAT6 or CAT6A cables.

Conductor wires do not need to be accurately trimmed to a specific length; instead, installers simply need to remove an appropriate section of jacket, remove the centre spline (if present), untwist the pairs into the right order, and trim the ends flat.

The cable can then be slid into the connector until seated.

The unit has been designed with

open ends that allow conductors to be completely fed through the connector before crimping.

The cable can be pushed into the connector to ensure the twisted pairs are as close to the pin contacts as possible, and that the jacket is seated beyond the primary strain relief for a secure connection.

Thanks to the clear connector design, the installer can then visually inspect and verify the correct wiring order, ensuring greater accuracy and fewer errors during the installation process.

Once the wires have been fed through, the installer can pull the

PROGRESSIVE APPROACH

cable into the plug, allowing the twists to be pulled to the front of the connector.

This provides better radio-frequency performance and minimal untwisting.

The versatile FT-45™ Crimp Tool designed to be used with the IDEAL Industries FT-45 Modular Plugs further enhances the right-first-time consistency of this approach.

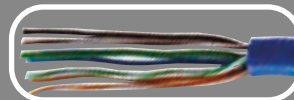
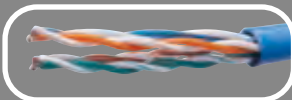
With a single crimp cavity for RJ-45/8-position connectors, it is capable of crimping **Ideal Feed-Thru standard, shielded, and unshielded** connectors for **CAT5e, CAT6** and **CAT6A** cables.

The installer simply squeezes the handle to the closed position to cleanly shear the excess conductor wires and leave a smooth, flat finish – crimping and cutting the cable in a single action.

To make it easier for installers to switch from conventional RJ-45 connections to the improved consistency and simplicity of the FT-45 system, IDEAL Industries has introduced two new FT-45 kits.

The kits include the FT-45 modular crimp tool, the IDEAL PrepPro cable stripper and the IDEAL Data T-cutter, along with a choice of either 50 unshielded connectors or 25 unshielded and 25 shielded connectors.

The speed, simplicity and consistency the system offers makes FT-45 a popular choice for installers, linking a progressive approach to installation with the progressive smart technology that is helping to reduce energy consumption in our built environment.





FT-45™ Modular Plug Crimp Tool

The FT-45™ is a simple, compact and highly effective crimp tool for installers and technicians that terminate RJ-45 connectors regularly.

Enables conductors to be cut flush with the end face of the connector when used with the FT-45™ tool.

- **Speed** - The simplified process of RJ-45 data terminations increases productivity
- **Accuracy** - Cleanly shears the excess conductors and leaves a smooth, flat finish
- **Reliability** - Clear connector design for visual inspection of wiring order reducing errors
- **Compact** - Easily fits in your pocket and lightens the tool bag load
- **Versatile** - Suitable with Feed-Thru, standard, or shielded connectors (CAT5e, CAT6 or CAT6A)
- **Heavy duty** - Cutting blade that will last for over 2,000 cuts
- **Ergonomic** - Reduced hand force compared to traditional crimp tools
- **Wiring scheme** - 568A & 568B marked on the tool
- **Easily maintained** - Replaceable cutting blades available

Description	Cat. No.
FT-45™ Feed-Thru Modular Plug Crimp Tool	30-495
FT-45™ Replacement Blade	30-4951

CAT5e/6/6A Feed-Thru RJ-45 Modular Plugs

Open end Feed-Thru connectors offer several advantages over standard closed end connectors.

- Reduces errors - Wires can be easily verified before trimming.
- Easy to use - Conductors do not need to be pre-trimmed to a specific length
- Improved wire stability - 3 prong contacts into every wire for more conductive contact points

**Large Diameter
CAT6A/6/5e**



CAT6 Feed-Thru



**CAT6 Standard
3-Piece***



**CAT5e Shielded
Feed-Thru**



CAT5e Feed-Thru



**CAT5e Standard
Shielded**



CAT5e Standard**



Description	Qty.	Cat. No.
CAT6A ^{***} /6/5e Shielded Feed-Thru RJ-45 Modular Plugs	10	85-363
CAT6A ^{***} /6/5e Shielded Feed-Thru RJ-45 Modular Plugs	25	85-368
CAT6A ^{***} /6/5e Shielded Feed-Thru RJ-45 Modular Plugs	50	85-369
CAT6A ^{***} /6 Unshielded Feed-Thru	50	85-385
CAT5e Shielded Feed-Thru RJ-45 Modular Plugs	25	85-365
CAT5e Shielded RJ-45 Modular Plugs	25	85-361
CAT5e Feed-Thru RJ-45 Unshielded Modular Plugs	25	85-370
CAT5e Feed-Thru RJ-45 Unshielded Modular Plugs	10	85-370-10
CAT5e Feed-Thru RJ-45 Unshielded Modular Plugs	50	85-371
CAT5e Feed-Thru RJ-45 Unshielded Modular Plugs	100	85-372
CAT6 Feed-Thru RJ-45 Unshielded Modular Plugs	25	85-375
CAT6 Feed-Thru RJ-45 Unshielded Modular Plugs	10	85-375-10
CAT6 Feed-Thru RJ-45 Unshielded Modular Plugs	50	85-376
CAT6 Feed-Thru RJ-45 Unshielded Modular Plugs	100	85-377

*see page 11 (85-366) / **see page 11 (85-346)

***only applies to a cable diameter of max. 8.1 mm with inner cores between 1.02-1.22 mm in diameter

Modular Plugs

- Plugs are capable of supporting the latest EIA/TIA cable system performance categories when installed in compliance with appropriate EIA/TIA standards and methods
- All plugs work with 24 AWG solid or stranded conductors and round or flat cables.



**85-344
RJ-11**



**85-346
RJ-45**

Description	Qty.	Cat. No.
8-Position 8-Contact, RJ-45 Shielded	25	85-361
8-Position 8-Contact, RJ-45	25	85-346
6-Position 6-Contact, RJ-11	25	85-345
6-Position 4-Contact, RJ-11	25	85-344

CAT6 RJ-45 Modular Plugs

- Unique three-piece design provides easy installation and optimal performance
- Crimps with a standard RJ-45 crimp die
- 50 micron gold contacts, 8-position, 8-contact
- Suitable for solid or stranded conductors – 22 – 23 AWG



Description	Qty.	Cat. No.
CAT6 RJ-45 Modular Plugs	25	85-366

Strain Relief Boots for Modular Plugs

- Prevents broken connector tabs and snagging while extending connector life
- Minimises cable bends that can reduce data speed and result in data loss
- Dampens cable movement and vibrations that can result in premature connector failure



Description	Qty.	Cat. No.
Strain Relief Boots for Modular Plugs*	25	85-380

* max cable diameter 55 mm (0.22")



FT-45™ KITS

SPEED, ACCURACY AND RELIABILITY

With increasingly sophisticated smart building systems comes a requirement for increasingly complex data networks which includes a large number of terminations.

Designed to completely re-think the traditional RJ-45 assembly and crimping process, IDEAL Industries' FT-45 solution allows installers of smart networks to speed up and simplify the termination of RJ-45 plugs by eliminating the need to trim conductors to a precise length before inserting the cable into the plug.

IDEAL kits meet the demands of today's network installers and come in a variety of options with or without the modular plugs, but all including a selection of quality tools required for installing data terminations faster, easier and more consistent.



30-5014EU



30-5015EU

DATA



33-507



33-508

Kit Includes:	33-507	33-508	30-5014EU	30-5015EU	30-5016EU
Unshielded Kit			✓		
Premium Kit				✓	
Smart Home Kit					✓
Feed-Thru RJ-45 Installation Kit	✓				
Twisted Pair Termination Kit		✓			
FT-45™ Modular Crimp Tool	✓	✓	✓	✓	✓
PrepPRO® Coax (59/6/6Q)/UTP Cable Stripper	✓	✓	✓	✓	✓
Data T®-Cutter			✓	✓	
Electrician's Scissors	✓	✓			
Punch Down Tool		✓			
Pouch	✓	✓			
CAT6A*/6/5e Feed-Thru Shielded RJ-45 Modular Plugs				✓ (25)	
CAT5e Feed-Thru Shielded RJ-45 Modular Plugs				✓ (25)	
CAT5e Feed-Thru Unshielded RJ-45 Modular Plugs			✓ (50)	✓ (25)	✓ (10)
CAT6 Feed-Thru Unshielded RJ-45 Modular Plugs			✓ (50)	✓ (25)	

*only applies to a cable diameter of max. 8.1 mm with inner cores between 1.02-1.22 mm in diameter

Data T[®]-Cutter

- Cuts round communication cable and maintains cable geometry for better cable performance
- Cuts multi-pair cable up to .500 in. (12.7mm) and coaxial cable up to RG-9/U
- Suitable for copper and aluminium (not steel reinforced)
- Steel reinforced centre conductors can be trimmed with bolt cutting holes
- Locking latch keeps tool closed in pouch



Description	Cat. No.
Data T [®] -Cutter	45-074

Electrician's Scissors

- Designed for use in telephone and electrical service applications
- Cut up to 16 AWG solid and 12 AWG stranded wire
- Serrated surface on back blade edge cleans wire and straightens twisted pair conductors
- Stripping notches strip 19 and 23 AWG wire
- Chrome over nickel plating



Description	Part No.
Electrician's Scissors w/stripping notches	35-088

PrepPRO[™] Coax/UTP Cable Stripper

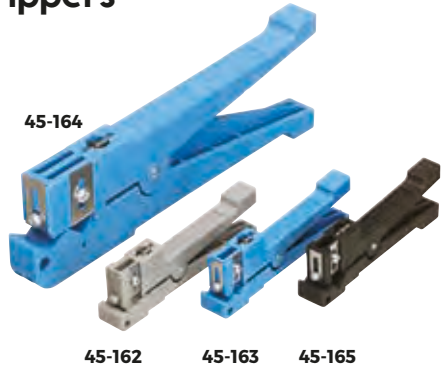
- Auto adjusting blade depth for 6/6Quad/59 coax cable
- 1/4" x 1/4" (6.4 x 6.4 mm) coax preparation
- Replaceable blade cartridges
- Spring loaded for consistent cutting force
- CAT5e/6 jacket stripping



Description	Cat. No.
PrepPRO [™] Coax/UTP Cable Stripper	45-605

UTP/STP/Coaxial Cable Strippers

- Four models cover cable diameters up to 9/16 inch (14.3 mm).
- All models include two adjustable depth blades and one adjustable round slitting blade
- Common uses are for fibre jackets, mini-coax prep, twisted pair cables and other speciality copper cables where standard stripping products are not available
- Replacement blades available for all models



Description	Typical RG Cables	Cat. No.
Coaxial Cable Stripper, up to 1/8 in. (3.2mm) O.D	RG-174, RG-187	45-162 (Grey)
Coaxial Cable Stripper, 1/8 in. (3.2mm) to 7/32 in. (5.556mm) O.D.	Mini Coax RG-58,CB	45-163 (Blue)
Coaxial Cable Stripper, 1/4 in. (6.4mm) to 9/16 in. (14.3mm) O.D.	RG-11, RG-8	45-164 (Blue)
Cable Stripper, 3/16 in. (4.8mm) to 5/16 in. (8mm) O.D.	RG-59/6, UTP Cable	45-165 (Black)
Replacement Blade Set* for 45-162, 45-163, 5-165	---	L-9225
Replacement Blade Set* for 45-164	---	L-9226

*A set of blades consists of three straight blades and one round blade.

Coax Stripper

- Specific adjustments needed for each cable size
- For crimp BNC and TNC connectors
- Strips braid 0.240 in. or 6mm and dielectric 0.240 in. or 6mm



Description	Cat. No.
Coax Stripper - 3 Step	45-520



Kinetic Super™ IDC Wire Stripper/Crimper Kit

- Cuts and strips 22 to 24 AWG
- Crimps IDC Connectors



Description	Cat. No.
Kinetic Super™ Wire Stripper/Crimper Kit – includes 25 IDC's (UR, 3-Wire Butt Splice)	33-719

IDC Insulation Displacement Connectors



UR



UY



UR2



UY2

Model	Colour	Ports	Conductor Range	Max. Insulation Diameter	Quantity	Part No.
UR	Red	3	19-26 AWG	0.066"	25	85-925
					100	86-925
UY	Yellow	2	22-26 AWG	0.060"	25	85-950
					100	86-950
UR2	Red	3	19-26 AWG	0.082"	100	86-930
UY2	Yellow	2	19-26 AWG	0.082"	100	86-955



Ratchet Telemaster™ RJ-11/RJ-45 Crimp Tool

- Pro quality ratcheting Telemaster™ Tool for RJ-45 and RJ-11 crimping modular plugs
- Gives repeatable crimp action for consistent, high quality connections
- For paired conductors
- Heavy-duty steel frame



Description	Cat. No.
Ratchet Telemaster™ RJ-11/RJ-45 Crimp Tool	30-696
Replacement Cut & Strip Blade Set for 30-696	LA-4102

Telemaster™ RJ-11/RJ-45 Crimp Tool

- Multi-function tool cuts, strips and crimps for easy one-tool application
- For paired conductors
- Steel frame for long-term durability. (Crimps primary modular plug strain relief only)



Description	Cat. No.
Tool for RJ-11 (1, 2, 3 pair) and RJ-45 (4 pair) Plugs	30-496-001
Replacement Cut and Strip Blade Set for Telemaster™	LB-1747

BT Connector Tool

A high quality crimp tool for use with standard 4 and 6 way BT telephone plugs. The tool is manufactured from strong, stainless steel with bright, yellow plastic handles and a spring action mechanism, ensuring comfortable, trouble-free use

- Multi-function ratchet action tool that cuts, strips and crimps
- Robust construction offering long-term durability
- Crimps 6-position RJ-12 and RJ-11 modular plugs
- Crimps 6-position BT plugs
- Cuts and strips flat cable

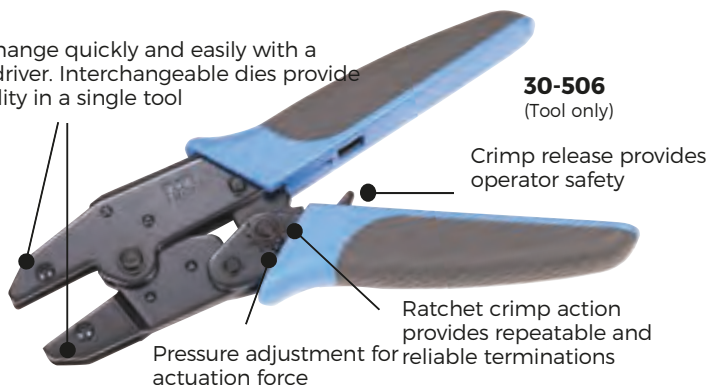


Description	Cat. No.
BT Connector Tool	30-527

Crimpmaster™ Crimp Tools & Die Sets

High quality ratchet-type crimp tool for electricians, contractors and installers who require guaranteed repeatability of good mechanical and electrical connections.

Dies change quickly and easily with a screwdriver. Interchangeable dies provide versatility in a single tool



30-559

RJ-45 Eight-position crimp die set for keyed or non-keyed modular plugs



30-581

Die set for RG-58, RG-59/62, BNC/TNC Coax Connectors (Hex, 0.255 (6.5mm), 0.213 (5.4mm), 0.068 (1.7mm))



30-579

Die set for insulated terminals/colour coded nests 22-10 AWG (.3mm² - 5.3mm²)



30-582

Die set for F-type CATV RG-59, RG-6 Connectors (Hex, 0.350 (8.9mm), 0.320 (8.1mm), 0.255 (6.5mm))



30-580

Die set for non-insulated terminals 22-8 AWG (0.3mm²-8.0mm²)



Description	Cat. No.
Crimpmaster™ Crimp Frame Tool	30-506
Die set for RJ-45 eight-position keyed or non-keyed modular plugs	30-559
Die set for insulated terminals/colour coded nests	30-579
Die set for non-insulated terminals	30-580
Die set for RG-58, RG-59/62, BNC/TNC Coax Connectors	30-581
Die set for F-type CATV RG-59, RG-6 Connectors	30-582

Punch Down Tool

- Insertion tool for Krone/LSA blocks
- For seating telecom and data cables into terminals



Description	Cat. No.
Punch Down Tool (Insertion tool for Krone blocks)	35-482

Krone® is a registered trademark of Krone, Inc.

PunchMaster™ Punch Down Tool

- Inserts and cuts cable terminations effortlessly
- Professional quality tool
- For seating telecom and data cables into terminals effortlessly
- Adjustable high/low actuation setting accommodates termination requirements
- Turn-Lock™ Style blade holding design
- Impact-absorbing cushioned grip reduces operator stress for high volume installers



Description	Cat. No.
Punchmaster™ II Punch Down Tool w/110 & 66 blades	35-485
Removable Krone® Blade for 35-485	35-478



OmniSeal™ PRO Compression Tool

The IDEAL OmniSeal™ PRO Compression Tool offers additional features and increased connector compatibility in a smaller, more compact tool designed to meet the demands of the professional installer.

Most other manufacturers compression connectors can be terminated with an easy plunger depth adjustment. The simple intuitive design combined with its size and universal connector acceptance makes this the only compression tool needed by professional installers.

- Factory preset to work with IDEAL compression connectors
- Compresses F-type, RCA, BNC and Mini connectors
- Adjustable to fit other manufacturer's connectors – no accessory adapters required



Description	Cat. No.
OmniSeal™ PRO XL Compression Tool	30-793

Connector & Tool Compatibility Chart

Type	IDEAL Connector	OmniSeal™ Pro XL 30-793	LinearX®3 33-632
F	F 6 RTQ™	✓	✓
	F 6Q RTQ™	✓	✓
	F 6 RTQ™ 90°	✓	✓
	F 59 RTQ™	✓	✓
	F 6 NJX™	✓	✓
	F 6Q NJX™	✓	✓
BNC	BNC 59	✓	✓
	BNC 59 90°	✓	✓
	BNC 6 RTQ™	✓	✓
RCA	RCA 6	✓	✓

- ✓ No tool adjustment needed.
- ✓ Tool adjustment needed.

DATA

LinearX® Compression Tool Features

- Adjustable post for different length/style connectors
- Compresses F/BNC/RCA connectors

A hinged hasp keeps the tool in a compact closed position when not in use

Handle has double dipped textured cushion grip for comfort and all-day use

One handed operation is possible with all compatible connectors.



Durable and rugged zinc die-cast body with a protective powder coated paint finish

Description	Cat. No.
LinearX®3 F/BNC/RCA Compression Tool (Adjustable) with four RTQ™ F-Connectors	33-632

LinearX®3 Hip Kit - 33-622

- Cut, strip and terminate F connectors in one handy starter tool kit

Description	Part No.	
LinearX®3 Hip Kit	33-622	
Kit Includes:	Qty.	Part No.
LinearX®3 Compression Tool	1	33-632
PrepPRO® Coax (59/6/6Q)/UTP Cable Stripper	1	45-605
Data T®-Cutter	1	45-074
Pouch with Belt Clip	1	—



Compression Connectors

RTQ™ XR™ Reg/Tri/Quad & Plenum F-Connectors

- Fits 60% regular, tri-shield and quad shield cables
- Nickel-plated, brass-construction for superior corrosion resistance
- Designed for use in satellite and cable TV installations
- Weatherproof for indoor and outdoor use
- Use 30-793 or LinearX® Compression Tool

RG-11 RTQ™ InSITE® F-Connectors

- Fits 60% regular and quad shield RG-11 cables
- Plenum cable version also available
- Use 30-793 Compression Tool for termination
- Standard 1/4" x 1/4" cable prep. Use 45-526 Coax Stripper

InSITE® BNC Connectors

- Clear 360° window for confident cable insertions
- Nickel-plated, brass-construction for superior corrosion resistance
- Moisture-inhibiting design
- Use 30-793 or 33-632 Compression Tool
- 75 Ohm nominal impedance
- Gold-plated pin contact area
- Available in straight, 90° and plenum versions

OmniCONN™ F-Connectors

- Non corrosive nickel plated brass body and polycarbonate bushing
- Nylon adapter sleeve and o-ring provide double protection for a watertight seal
- Free spinning hex nut for ease of installation onto all 7/16 ports
- 75 ohm nominal impedance
- Two-piece pre-assembled connectors

NJX™ Connectors

- 75 ohm nominal impedance
- Bandwidth up to 3 GHz
- Compatible with all IDEAL Compression Tools
- Designed for indoor use
- RG-6 and RG-6 Quad versions

TLC™ Connectors

- No compression tool required
- 75 ohm nominal impedance
- Bandwidth up to 3 GHz
- Designed for indoor use
- RG-6 and RG-6 Quad versions








Compression Connectors

Type	Image	Series/Model #	Cable Type	Quantity	Part No.	
F		RTQ™ XR™ Model #6FRTQXR	RG-6/6Q RTQ™ & Plenum 6/6Q RTQ™	Card of 10	92-651	
				Jar of 50	92-650	
				Jar of 100	92-656	
				Bulk 1,000	92-659	
	RG-6		InSITE® RTQ™ 90° Model #6FRAIS-RTQ	RG-6/6Q RTQ™ & Plenum 6/6Q RTQ™	Card of 5	92-691
			NJX™ Model #6FNJX	RG-6	Card of 10	89-040
			NJX™ Model #6QFNJX	RG-6 Quad	Card of 10	89-041
			TLC™ Model #6FTLC	RG-6	Card of 10	85-068
					Card of 4	85-069
					Card of 50	85-168
			TLC™ Model #6QFTLC	RG-6 Quad	Card of 4	85-079
					Card of 50	85-178
	OmniConn™ Model #6FOC	RG-6	Jar of 50	89-044		
			Bulk 1,000	89-1544		
	OmniConn™ Model #6QFOC	RG-6 Quad	Jar of 50	89-045		
			Bulk 1,000	89-1545		
RC-59		RTQ™ Model #59FRTQ	RG-59/59Q RTQ™	Card of 10	92-611	
				Jar of 50	92-610	
RG-11		RTQ™ Model #11FISRTQ	RG-11 RTQ™ RG-11 Quad	Card of 10	89-211	
		Cable Specific Model #11PLFIS	RG-11/11Q Plenum	Card of 10	92-212	
RCA		RTQ™ Model #59RCARTQ	RG-59/59Q RTQ™	Jar of 35	89-570	
					RTQ™ Model #6RCARTQ	RG-6/6Q RTQ™

DATA

Compression Connectors

Type	Image	Series/Model #	Cable Type	Quantity	Part No.		
BNC		InSITE® Model #59BNCIS	RG-59	Card of 4	92-704		
				Card of 15	89-047		
				Jar of 35	89-5047		
				Bulk 1,000	89-1047		
		InSITE® 90° Model #59BN- CRAIS	RG-59	Card of 5	92-693		
				InSITE® Model #59PLB- NCIS	RG-59 Plenum	Card of 15	89-049
		InSITE® RTQ™ Model #6BNCIS- RTQ	RG-6/6Q RTQ™ & Plenum 6/6Q RTQ™			Card of 4	92-705
						Card of 15	89-048
	InSITE® 90° Model #6BN- CRAISRTQ	RG-6/6Q RTQ™ & Plenum 6/6Q RTQ™	Jar of 35	89-5048			
Card of 5	92-695						

Compression Cable Preparation Instructions

All IDEAL compression connectors require a standard 6.5 mm x 6.5 mm (1/4" X 1/4") cable preparation.

This preparation leaves 6.5 mm (1/4") of the centre conductor exposed and an additional 6.5 mm (1/4") of the shielding exposed.

Preparation tools are available in single, two or three blade models. Two blade models are the most commonly used type of stripping tool for coax compression as they remove both 6.5 mm (1/4") sections at one time during the preparation.

Single blade models require two separate stripping actions for compression preparation.

IDEAL has several models of cable preparation tools that are compatible with compression connectors, each having various feature choices such as user adjustable blade depths, replaceable blades, number of active blades, product size and hand motion required to prepare the cable.

Serrated Kevlar® Cutter

- Superior quality high-carbon stainless steel with molybdenum and vanadium provides hard, razor-sharp edges
- Breaker notch cuts jacket and breaks fibreglass in one step
- Textured cushioned-grip handles
- Designed to cut up to 3mm fibre cables



Description	Part No.
Serrated Cutter w/Breaker Notch (Patent pending)	45-344

Note: Kevlar® is a registered trademark of E. I. du Pont de Nemours and Company.

MiniLite-Strip™ Optical Fibre Stripper

- Small strip notch engineered and precision-ground to strip 900 micron or 250 micron buffer coatings from 125 or 140 micron fibre
- Larger round strip notch machined to remove the 3mm outer jacket
- Strip notches pre-set and locked, no field adjustment necessary



Description	Part No.
MiniLite-Strip™ Optical Fibre Stripper	45-352

DualScribe™ Double-Ended Fibre Optic Scribes

- Three professional quality blade styles to choose from to meet your specific needs – Ruby, Sapphire, Carbide
- 30° single bevel – DualScribe™ reversible blade doubles tool life
- Soft non-slip grip provides precise control during scribing
- Clear safety cap protects the blades from damage when not in use



Description	Part No.
Ruby Blade Fibre Optic Scribe (Red Handle)	45-357
Sapphire Blade Fibre Optic Scribe (Blue Handle)	45-358
Carbide Blade Fibre Optic Scribe (Black Handle)	45-359

1 GHz Cable TV/General Purpose Splitters

- Splits 1 input signal into 2 output signals
- Designed for use in Digital Cable TV and standard coax splitting applications
- 5 MHz to 1 GHz bandwidth
- Internal printed circuit board for improved electrical performance
- Nickel plated zinc construction
- EMI/RFI shielding effectiveness: >-120dB
- Insertion loss: 3.5dB to 4.0dB over rated frequency range
- For 75Ω coaxial cable systems



Description	Part No.
High Performance Cable Splitter, 5MHz-1GHz, 2-Way	85-132
High Performance Cable Splitter, 5MHz-1GHz, 3-Way	85-133
High Performance Cable Splitter, 5MHz-1GHz, 4-Way	85-134

2.4 GHz Satellite & Digital TV Splitters

- Splits 1 input signal into 2 balanced output signals
- Designed for use in High Definition applications - Satellite/Digital Cable TV
- 5 MHz to 2.4 GHz bandwidth
- All ports are power-pass: 0.5 Amp DC; 60 Volt DC Max.; 12-18 Volt DC typical operation for LNB power.
- Internal printed circuit board for improved electrical performance
- Nickel plated zinc construction
- EMI/RFI shielding effectiveness: >-80dB
- Insertion loss: 4.4dB to 6.4dB over rated frequency range
- For 75Ω coaxial cable systems



Description	Part No.
2-Way, 5MHz - 2.4GHz	85-332
3-Way, 5MHz - 2.4GHz	85-333
4-Way, 5MHz - 2.4GHz	85-334