



## **SpliceLine™ Model 42 In-Line Push-In Wire Connectors**

### **Installation Instructions:**

**To be sold only with installation instructions.**

**⚠Warning** Contact with electricity can cause electrical fires, personal injury, or death. Shut off power to the circuit before using this product and consult local building codes to determine installation requirements.

1. Wiring must comply with all applicable electrical codes.
2. Turn OFF power before removing or installing connectors.
3. Cleanly strip wires ½".
4. Grip wire firmly and push conductor into open port.  
Slightly twist stranded wire counterclockwise while inserting.  
Use only one conductor per port.
5. Verify conductor is fully inserted to the back of the connector.
6. Connector is reusable on solid wires of the same diameter or larger. If reusing connector, cut and re-strip conductors.
7. In order to remove a wire, pull and twist the wire back and forth.

DO NOT RE-USE connector on stranded wire.

USE ONLY INSIDE AN APPROVED ELECTRICAL ENCLOSURE.

COPPER TO COPPER ONLY: Do Not Use on Aluminum wire.  
Temperature Rating: 105°C (221°F) maximum. 600 volts/20A maximum building wire.  
1000 volts in signs and lighting fixtures.

For use on insulation types TFN, TFFN, THHN, THWN, XHHW, T90 nylon or equivalent.

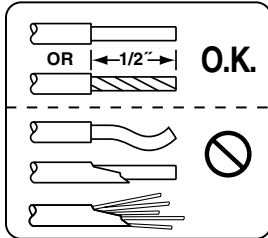


## Wire Range:

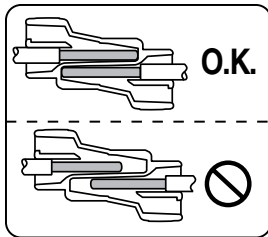
12 to 20 AWG Sol. } REUSABLE

12 to 16 AWG Str. ( $\leq 19$  strands) } NON-REUSABLE

### Strip Length

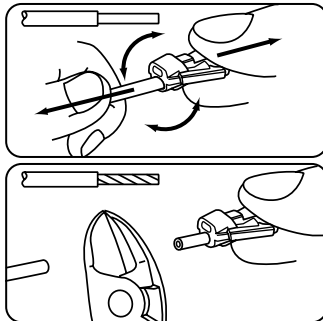


### Insertion

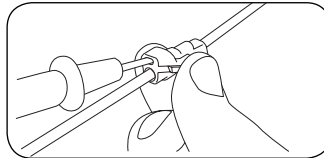


In order to remove solid conductors, pull and twist back and forth. For stranded wire, use a new connector.

### Removal



### Test



## IDEAL INDUSTRIES, INC.

Sycamore, IL 60178, U.S.A.

800-435-0705 Customer Assistance

[www.idealindustries.com](http://www.idealindustries.com)

**ND 7400-2**